

**RESILIENT ARMOUR**



**A NEW SUPERHERO THAT SAVES YOU  
MORE THAN MONEY**

**RA4.5**



## **RESILIENT ARMOUR**

**STOP RESURFACING  
YOUR SHOP FLOOR!**

**STOP THE EPOXY CYCLE!**

**RESILIENT ARMOUR  
YOUR SUPER FLOOR!**



# **SUPER AWESOME RESULTS!**

**MAKES EPOXY COATINGS OBSOLETE.  
AFFORDABLE.**

**LONG USE LIFE-CYCLE FLOOR.**

**INSTALLS FAST.**

**RUGGED AND DURABLE.**

**SAFER AND STRONGER.**

**WEARS LIKE ARMOUR.**

**FLOORS LOOK "LIKE-NEW".**

**EASY TO REPAIR & REPLACE.**

**REPLACE PANELS IF DAMAGED.**

**INDUSTRIAL ADHESIVE BONDED.**



**RA4.5**



# RESILIENT ARMOUR



TROWELED  
ADHESIVE



RA4.5



# RESILIENT ARMOUR

RA4.5

  
TROWELED ADHESIVE

# SUPER PROTECTION & PERFORMANCE

**RA4.5**

## COAT OF ARMS



PROTECTION THAT LIVES ON  
**MICROBAN**

**99.9% FREE  
ANTI-MICROBIAL  
SURFACE**

No mold or mildew smell  
and a 99.9% bacteria-free  
surface.



**SURFACE  
CAMOUFLAGE**

Enhances the  
beauty of your floor  
and camouflages  
contaminants  
generated during  
your workday.



**SCRATCH  
RESISTANT  
SURFACE**

Will not dent, scratch  
or chip like metal,  
concrete, epoxy,  
tile or other  
finishes.



**CHEMICAL  
RESISTANT  
SURFACE**

Resistant to water  
gasoline, MEK, acetone,  
motor oil, isopropanol,  
acetic acid, ammonia,  
sodium chloride and  
other chemicals.



**IMPACT  
GUARD  
SURFACE**

Strong, rugged, and  
stands-up to blunt  
force impact better  
than any other  
surface.



# RESILIENT ARMOUR



RA4.5

  
TROWELED ADHESIVE

# BUILDING BETTER WORKSHOPS FOR SUPER TECHS

HELL NO!  
I WON'T RESURFACE  
OUR SHOP AGAIN!



## CLIMATE CONTROLLED ENVIRONMENTS

Recommended for climate controlled environments with a temperature range of 40 to 104 degrees.



## FLOOD SAFE & WATER RESISTANT

Panels are moisture-resistant and can be submerged in water for days and remain bonded\* (use recommended adhesive for your facility application).



## LESS NOISE BETTER SHOP ENVIRONMENTS

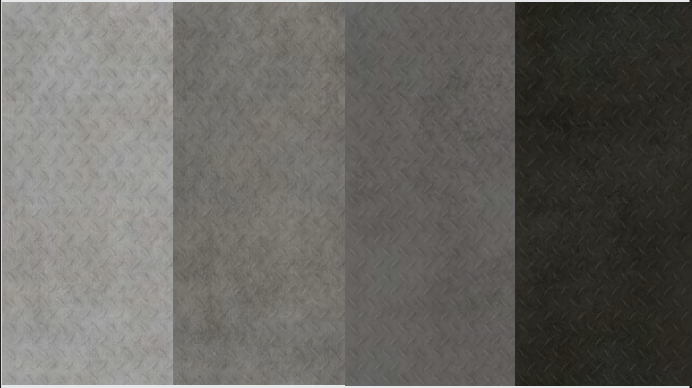
Reduces noise (dB's) decibels and creates a better working environment for your technicians.





# RESILIENT ARMOUR

## STOCKED COLORS 18" X 36" PANELS



**GREY  
CONCRETE**

**DEEP  
CONCRETE**

**SMOKE  
STONE**

**MIDNIGHT  
BLACK**

### RESILIENT ARMOUR

14086 PROTON ROAD DALLAS, TX 75244 | 214-393-4875 (P) 214-292-9387 (F)  
HELLO@RESILIENTARMOUR.COM | RESILIENTARMOUR.COM

TROWELED  
ADHESIVE



**RA4.5**